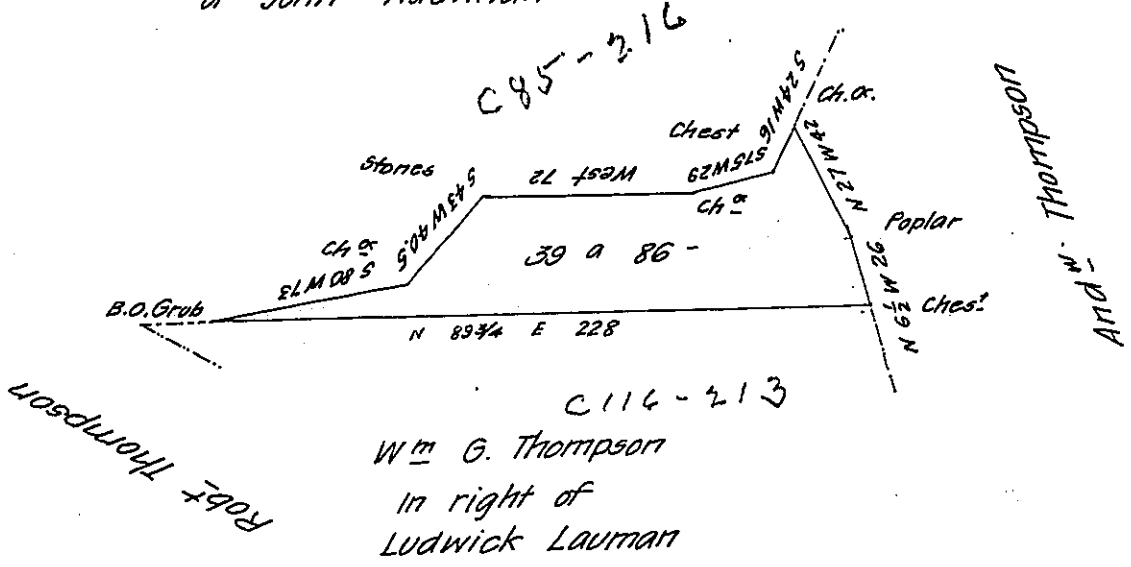


Edw^d P. Thompson in right
of John Haultman



A draught of a tract of land containing 39 A 86 perches with the usual allowance of six per Cent for Roads &c Situate in Delaware township Juniata County surveyed the 25th day of April 1850 and applied to a warrant granted to Wm G. Thompson dated the 20th day of June A.D. 1850

Joseph Middagh D.S.


To John Laporte Esq.

Sur. Gen^l of Penn^a

 The above land is unimproved

J.M.

IN TESTIMONY that the above is a copy of the original remaining on file in the Department of Internal Affairs of Pennsylvania, made conformably to an Act of Assembly approved the 16th day of February, 1833, I have hereunto set my Hand and caused the Seal of said Department to be affixed at Harrisburg, this second day of March 1908


Secretary of Internal Affairs.